

1085

Digital Technology

# Aficio<sup>®</sup> 1085

*High Performance On-Demand Printing Solution*



**RICOH<sup>®</sup>**

# Aficio<sup>®</sup> 1085

## A Networked High Performance and Productive On-Demand Printing Solution From the Digital Technology Leader

*Now you can have the production quality, high-performance and productivity of a digital imaging system for your workgroup, central reprographic department or print-on-demand environment with the RICOH<sup>®</sup> Aficio 1085. With its advanced, integrated digital Document Server and Editor technology, the Ricoh Aficio 1085 combines the productivity of an 85 ppm digital imaging system with a fully networked, high speed laser printer with exceptional image quality.*

*Enhanced digital technology allows the Aficio 1085 to handle your business applications whether you're in a walk-up or production environment or managing your documents from your desktop. You may simply program the Aficio 1085, walk away and return when the job is complete*

*or have the convenience of your capabilities right at your desktop. Collate, covers, tabs, chapters, signature booklets, page numbering and stamping, stapling or punching... it all takes place in one smart system.*

*The Aficio 1085's versatile, intuitive and easy-to-use interface puts a wide range of total print solutions right at your fingertips, so you'll have control of your most critical documents at all times.*

*Best of all, the Aficio 1085 comes from Ricoh, the pioneer in dependable digital output.*



Ricoh Aficio 1085 with SR810 Finisher

**Digital Technology**



Touch Panel Display

## Digital Technology Gets Results

For all its advanced capabilities, the Ricoh Aficio 1085 system is remarkably user friendly. An enhanced, color touch panel display with dual language allows users to easily program any operation, showing only the information needed for the task at hand.

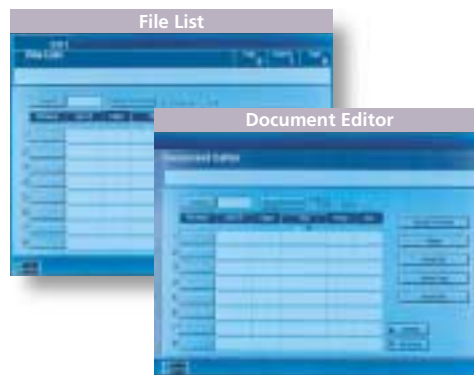
Integral to the Aficio 1085's amazing performance is one of the world's fastest digital scanners...**72 originals per minute**. Plus, faster scanning means less time standing at the system. For increased productivity, a 100-sheet Automatic Reversing Document Feeder allows you to batch feed more than 100 originals or scan in additional jobs while the current job is running, leaving you free to take your originals and tend to other business.

### **Scan Once, Print Many**

Scan documents once, directly into the Aficio 1085's powerful memory and let the system pump out the volume. High-performance printing means greater reliability and more uptime.

## Document Server & Editor Technology—A Suite of Workflow Utilities

The Document Server & Editor allow users the flexibility to handle both paper-based and electronic originals in a variety of applications. The Aficio 1085 allows you to mix hard copy and/or electronic input quickly and easily, making the production of complex, multi-section documents simple.



The Document Server stores up to 250 jobs, dynamically linking electronically created and paper-based originals scanned into memory. These searchable files can be located by document File Name, User ID or Time for easy access. The Document Editor allows you to retrieve and edit files for a suite of diverse innovative solutions that significantly enhance printing productivity.

### **Sample Set/Proof Printing**

Allows users to verify or change settings to a document prior to printing the entire job and saves waste, increasing overall productivity.

### **Secure Printing**

Password protects confidential documents and holds them in memory until retrieved by an authorized party.

### **File Merge Printing**

Conveniently merges files and allows the easy assembly of complex documents from various applications.

### **Print-on-Demand**

With the Aficio 1085's Print-on-Demand system, you produce only the output you need, when you need it; eliminating warehousing or stocking costs.

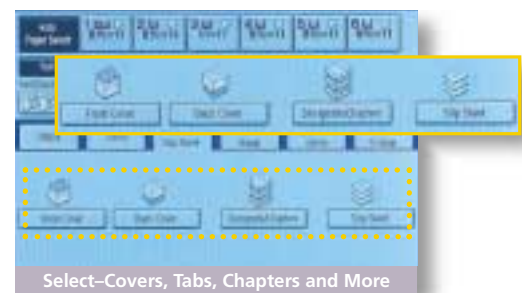
This is especially useful for large documents such as sales, training and service manuals that require ongoing changes and modifications. To store and retrieve

these large files, an optional CD-R/RW drive is available.



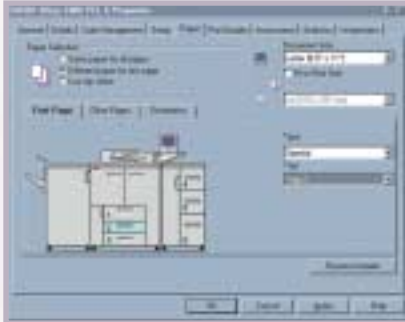
### **Simplify Your Complex Jobs**

The Aficio 1085 provides the flexibility to handle virtually any job. Select covers, tabs, chapters, and more, then press a button to start the job. The touch panel display shows exactly what stock is located in each tray, making selection fast and easy.



# Aficio® 1085 Document Management

## Connectivity Options



Type 850 Print Controller



MicroPress Document Production System



Fiery EB-105e Embedded Print Controller



# Professional Output

## Finishing Options



SR85 Bookletmaker On-line/Off-line



Ricoh Aficio 1085 with SR810 Finisher



Ricoh Aficio 1085 with SPF-9R Bookletmaker

# The Aficio® 1085

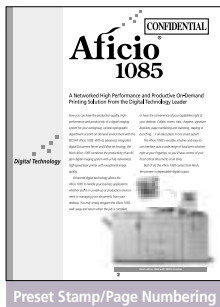
## Stamping and Numbering

The Ricoh Aficio 1085 will automatically place the date and number the pages of a document at the time of printing. This allows you to assemble a new document made up of existing materials from a variety of sources—hard copies, electronic files, etc.—without the need for manual dating and numbering. For improved security, you can even choose to have the Aficio 1085

background number each set it prints with an identifying number on each set. The system includes a range of preset stamps—Copy, Urgent, Draft, Confidential, and more—or you may create your own stamps for custom applications.



Background Numbering



Preset Stamp/Page Numbering

## Productive and Versatile Finishing

For added productivity, the Aficio 1085 electronically sorts output automatically, without the limitation of a mechanical sorter.



SR810 Finisher/100-Sheet Stapler

The Aficio 1085 staples documents up to 100 pages, then automatically trims the staples to the correct length. Plus, the system offers four position stapling for true professional output. The finisher unit's advanced design allows no-delay stapling at the same speed as copying or printing.

## Integrated Hole Punching

Using the optional 3-hole or 2-hole punch with the SR810 Finisher, the Ricoh Aficio 1085 may be programmed for on-line hole punching as part of a job, rather than requiring a separate operation.

## Professional Booklets

Professional-quality booklets can now be produced easily and reliably, when you combine the versatility of the Ricoh Aficio 1085 Digital Imaging System with the high-performance SR85 Bookletmaker or SPF-9R Bookletmaker.

## Made to Run "Limitless" Toner and Paper Supply

The Aficio 1085 provides two toner bottles on-line for change-on-the-fly, continuous performance. The system's standard 7,550 sheet paper capacity includes Ricoh's unique tandem tray, plus two 500 sheet universal trays (up to 11" x 17") and three 8 1/2" x 11" trays for 20 lb. Bond or heavier paper stock—including 90 lb. and 110 lb. index stock, 80 lb. cover stock and up to 12-bank tab stock.

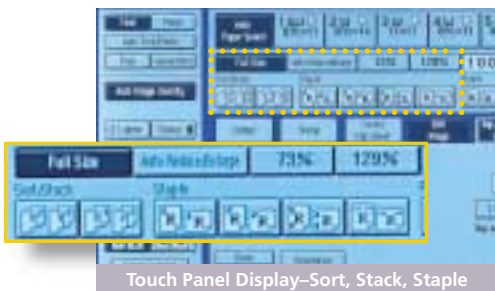


Two Toner Cartridges



Paper Trays

With this combination of production image quality, enhanced performance and exceptional capabilities, provided by a recognized leader in digital technology, the Ricoh Aficio 1085 is the smart output solution for your demanding environment.



Touch Panel Display—Sort, Stack, Staple

## Fiery EB-105e Print Controller Capabilities & Specifications

**Aficio®**  
**1085**



### Aficio 1085 Fiery® EB-105e Embedded Print Controller Assures Image Quality & Flexibility

Increased productivity is the result when the Fiery EB-105e teams up with the RICOH® Aficio® 1085. Designed to support the most demanding Print-for-Pay and Production environments, the EB-105e delivers smooth, consistent black and white printing with astonishing speed.

The Fiery EB-105e is designed for ease-of-use and includes document building tools, print drivers for a variety of platforms, utilities for remote job management, and a local interface for immediate control on the Fiery.

**Speed For Productivity** The Fiery EB-105e provides document printing capability with Rip-While-Print and Continuous Print technologies optimized for black and white business applications. The Aficio 1085 is driven at its rated speed and offers users full control of advanced paper-handling features including sorting, stapling, hole punching, cover stock and tab extension printing.

With a full suite of network and workflow utilities, the EB-105e gives users of all knowledge levels an easy-to-use interface and the ability to produce!

**Fiery FreeForm™** Up to 100 master forms may be RIPed separately and stored. Variable data can be customized and automatically merged later for the flexibility you expect.

**Fiery NetWise 2.0™** This networking architecture enables network administrators to easily integrate new Fiery servers into existing networks with minimal effort. Auto-switching protocols, auto-sensing

ports and support of standard 10/100BaseT connections make it the most universal Novell NDS Compliant network architecture.

**Fiery Downloader™** Users can download Postscript EPS, PCL and PDF files, as well as manage fonts. Users can modify settings or edit the number of required copies without opening application programs.

**Fiery WebTools™** Fiery WebTools provide a complete set of platform independent remote printer management utilities that allow print jobs to be managed remotely over corporate intranets or the Internet with a Java enabled web browser. Through WebSpooler, the user may view the printer status as well as track each print job as it is being Spooled, RIPed or Printed.

**DocBuilder Pro™** (optional) Users can preview and merge pages or hold jobs from different applications and platforms and preview full pages prior to printing.

**Command WorkStation™** (optional) Allows users to track, manage, and control print jobs from a centralized location, ensuring the highest production for Print-for-Pay and Central Reprographic Departments.

#### Fiery Controller Features

- ▶ *RIP-While-Print*
- ▶ *Continuous Print*
- ▶ *Adobe PostScript Level 3*
- ▶ *Job Log*
- ▶ *Workflow Utilities*
- ▶ *Easy-to-Use Interface*
- ▶ *Increased Productivity*
- ▶ *Remote Printer Management Utilities*



**RICOH®**

# Aficio® 1085

## System Requirements and Specifications

### Hardware

<b>Fiery X2e Motherboard:</b>	MIPS R7000 @266 MHz CPU 64 MB RAM (standard) 64 MB RAM (optional) SDRAM enabling fast memory access High speed 64-bit bus 6 GB Hard Disk
<b>Resolution</b>	600 x 600 dpi
<b>EFI Custom ASICs</b>	IX ASIC – Increased speed of I/O functions DX ASIC – High speed and access of various memory types and speeds VX2b ASIC – High speed Video Interface
<b>Page Description Language/Fonts</b>	Adobe PostScript 3 136 Adobe Roman PostScript PCL5e and PCL6 PDF Printing
<b>Utilities</b>	Fiery FreeForm™ Fiery WebTools™ WebSpooler™ WebSetup™ Configure Print Status Fiery Downloader™ Fiery Print Drivers for Macintosh and Windows

### Networking – Netwise 2.0™

<b>Simultaneous auto-switching protocols:</b>	EtherTalk TCP/IP Novell IPX 802.2, 802.3, 802.5 Ethernet II, and SNAP frame types
<b>Auto-sensing ports:</b>	RJ45 Parallel port (in) IEEE 1284, Type C Ethernet 10/100BaseT standard support

Specifications and external appearances are subject to change without notice.

## Fiery EB-105e Controller Specifications

### EB-105e Controller Options

64 MB RAM Upgrade  
Command WorkStation™ for centralized job management  
DocBuilder Pro™ with Command WorkStation™ for server based, in-RIP imposition

### Regulatory Approvals

CSA	CE Mark
TUV/GS	EN55022 Class B
UL	FCC Class B
EMC	VCCI Class A



EPA 2000 Office Products Partner of the Year (5th consecutive year)  
EPA 2000 Labeling Partner of the Year

Ricoh Corporation has determined that this product meets the Energy Star® guidelines for energy efficiency.

OFFICIAL PRINTER,  
COPIER AND FAX  
OF THE PGA OF AMERICA



Printed in U.S.A. on recycled paper because Ricoh cares.

Ricoh is a registered trademark of Ricoh Company, Ltd.  
All other trademarks are the property of their respective owners. © Ricoh Corporation

**RICOH®**  
Image Communication

Ricoh Corporation, Five Dedrick Place, West Caldwell, NJ 07006  
Phone: (973) 882-2000 Website: <http://www.ricoh-usa.com>

CA-0120E

# Peerless Type 850 Print Controller Capabilities & Specifications

# Aficio® 1085



## Powerful Connectivity For Your Networked Office

The optional Peerless Type 850 print controller provides the RICOH® Aficio 1085 with the enhanced productivity of a fully networked, high-speed 85 ppm laser printer with exceptional 600 dpi image quality. It is the ideal solution for work environments such as large businesses and central reprographic departments, or as a shared resource for the large workgroup, where high speed, high volume, production quality and flexibility are essential.

You can conveniently control the Aficio 1085's advanced capabilities right from your desktop.

Copy, collate, insert covers, chapter separators, print page numbers and stamps, staple or punch—it all takes place in one very smart system. The Document Server creates innovative solutions to enhance printing productivity including:

**Proof Printing**—Print a sample set for approval before printing a large job to prevent waste.

**Secure Printing**—Send your electronic documents with a password to insure security.

**On-Demand Printing**—Keep files with their job settings at the Document Server for easy retrieval the next time the file is needed for printing.

**File Merge/Delete**—Merge electronic and/or paper based originals to create a new file. Delete or add files as required.

PCL5e/PCL6 is standard, allowing the Aficio 1085 to work with all major PC applications. PCL drivers are available for Windows 95/98/2000 and NT 4.0. An optional Adobe PostScript 3 module offers drivers for the above applications, plus the latest Macintosh OS. **The result?** Flexible, powerful network connectivity in the widest range of environments.

The Aficio 1085's impressive performance is enhanced through the Ricoh Aficio Manager utility software. Aficio Manager allows you to monitor and manage the performance of Ricoh printer peripherals attached to your local area network. By permitting you to view the status of Ricoh printer peripherals—in real time—and reroute print jobs if problems arise, Aficio Manager significantly reduces job time and increases productivity. Plus, Aficio Manager's "PortNavi" allows you to parallel print utilizing Aficio 1085s, thus increasing your productivity.

The Ricoh Aficio 1085 with printer connectivity—the networked high performance and productivity solution from the digital technology leader.



  
Adobe® PostScript® 3™

# RICOH®

# Aficio® 1085

## Printer Specifications

<b>Print Speed:</b>	85 ppm
<b>Interface:</b>	Ethernet Network Interface Card 10/100BaseT Parallel Port (IEEE 1284)
<b>CPU:</b>	Power PC 740/266 MHz
<b>Network Protocol:</b>	TCP/IP, IPX/SPX, AppleTalk
<b>Memory Capacity:</b>	32 MB Standard (Expandable to 256 MB)
<b>Hard Disk Drive:</b>	6 GB (optional)
<b>Printer Language:</b>	PCL5e/PCL6 (Standard) Adobe PostScript3 (Optional)
<b>Print Drivers:</b>	PCL5e/PCL6 for Windows 95, 98, 2000, NT 4.0, Adobe PostScript3 for Windows 95, 98, 2000, NT 4.0, Macintosh
<b>Print Resolution:</b>	PCL6/600 dpi (2400 x 600 dpi with Edge Smoothing) PCL5e/600/300 dpi Adobe PostScript3/600 dpi
<b>Fonts:</b>	Standard: 35 Intellifonts, 10 TrueType Fonts, 1 Bitmap Optional: 136 PostScript Fonts

## Accessories

**Adobe® Postscript® 3™ Type 850  
 Printer Hard Disk Drive Type 850  
 Network Interface Board Type 450-E  
 Type 850 Interface PCB  
 Type 850 32 MB Printer Memory  
 Type 850 64 MB Printer Memory  
 Type 850 128 MB Printer Memory**

## Features

<b>Binding (Top &amp; Side)</b> Collation Cover Sheet Printing Document Server Duplex Printing Layout (up to 16 pages per sheet) Magazine Mode OHP Slip Sheet Printing	<b>Proof Printing</b> Punch/3 or 2 hole (top or left) Sample Print Secure Print Separator Page (with PostScript 3 only) Special Stock (Thick, Transparency) Stapling (4 choices) Tray Lock
---	---

## Work Group Multi-User/Shared

### Clients on LAN



## Production/On-Demand

### Administrator on LAN



Adobe PostScript® 3™



EPA 2000 Office Products Partner of the Year (5th consecutive year)  
 EPA 2000 Labeling Partner of the Year

Ricoh Corporation has determined that this product meets the Energy Star® guidelines for energy efficiency.

OFFICIAL PRINTER,  
 COPIER AND FAX  
 OF THE PGA OF AMERICA



Ricoh Consumables: For maximum performance and yield, we recommend using genuine RICOH parts and supplies.

Specifications and external appearances are subject to change without notice.

Printed in U.S.A. on recycled paper because Ricoh cares.

Ricoh is a registered trademark of Ricoh Company, Ltd.  
 All other trademarks are the property of their respective owners. © Ricoh Corporation

**RICOH®**  
 Image Communication

Ricoh Corporation, Five Dedrick Place, West Caldwell, NJ 07006  
 Phone: (973) 882-2000 Website: <http://www.ricoh-usa.com>

CA-0120P

## Digital Copier Capabilities & Specifications

**Aficio®  
1085**



### The Dependable Digital Difference

Give your office the powerful benefits of high speed digital output and production quality with the RICOH® Aficio 1085. With its advanced, integrated digital technology, the Ricoh Aficio 1085 combines impressive 85 digital pages per minute, with exceptional 600 dpi image quality, to put superior performance and productivity right at your fingertips.

The heart of the Aficio 1085 system is a superb 85 pages-per-minute engine, combined with the system's amazing digital scanner—scanning up to 72 originals per minute. Additional capabilities include a 100 sheet Automatic Reversing Document Feeder, a high capacity 3,000 sheet, four-position stapler/finisher, capable of stapling up to 100 sheets per set.

A color touch screen display guides you through each operation, showing you only the information you need for the task at hand. Pre-programmed shortcut keys make performing many common tasks a one-touch proposition.

The Aficio 1085's "scan once, print many" technology allows users to scan documents directly into the Aficio 1085's powerful memory. Select cover stock, tabs, chapters and more, press a button, then walk away with your originals while the operation is completed automatically. Among its many productivity-enhancing capabilities, the Aficio 1085 includes an integrated 3-hole (or 2-hole) punch, stamping and numbering, stapling, sample set proofing and more.

The Aficio 1085 provides two toner bottles on line for change-on-the-fly, continuous performance. The system's standard trays include one tandem tray (up to 2,000 sheets of 8 1/2" x 11"), two 500 sheet universal trays (up to 11" x 17") and a Large Capacity Tray offering three additional 8 1/2" x 11" trays, providing a total paper capacity of 7,550 sheets. You can add paper to any tray not in use. When a paper tray is empty, the Aficio 1085 automatically shifts to a tray containing the same paper type and continues the job uninterrupted and without operator intervention.

Best of all, the solution-packed Aficio 1085 comes from Ricoh, the digital technology leader.



**RICOH®**

# Aficio® 1085

## General Specifications

<b>Printing Process:</b>	Dry Process (Dual Component)
<b>Reading Element:</b>	4 Channel CCD Array
<b>Configuration:</b>	Console
<b>Standard Memory:</b>	48 MB x 2 (RAM)/4.3GB x 2 (HDD)
<b>Warm Up Time:</b>	6 Minutes
<b>Quantity Indicator:</b>	1 to 9,999
<b>Power Source:</b>	220V/240V/60Hz/20A
<b>Full System Dimensions (WxDxH):</b>	87.3" x 28.9" x 58.1"
<b>Weight:</b>	864.9 lbs.

### Paper Supply

<b>Paper Feed:</b>	1st Tray 1,000 sheets x 2 (Tandem Tray); 2nd and 3rd Tray 500 sheets (User Adjustable)
<b>Paper Size:</b>	5 1/2" x 8 1/2" to 11" x 17"
<b>Paper Weight:</b>	14 lb. Bond-90 lb. Index

### RT42 Large Capacity Tray:

<b>Paper Size:</b>	5 1/2" x 8 1/2" to 8 1/2" x 11"
<b>Paper Capacity:</b>	4th & 5th Tray 1,000 sheets; 6th Tray 2,550 sheets
<b>Paper Weight:</b>	14 lb. Bond-80 lb. Cover (4th & 5th Tray) 14 lb. Bond-90 lb. Index (6th Tray)
<b>Total Capacity:</b>	7,550 sheets

## Engine Specifications

### Speed

<b>First Copy:</b>	4.1 seconds
<b>Copying Speed:</b>	85 copies/minute
<b>Copy Resolution:</b>	600 x 600 dpi
<b>Gray Scale:</b>	256 levels

### Original/Copy Size

<b>Original Type:</b>	Book/Sheet
<b>Original Size:</b>	Up to 11" x 17"
<b>Copy Size:</b>	5 1/2" x 8 1/2" to 11" x 17"
<b>Copy Type:</b>	Plain Paper, Transparencies, Tabs, 90 & 110 lb. Index, 80 lb. Cover

### Duplex

<b>Type:</b>	Four Page Stackless Interleave
<b>Capacity:</b>	Unlimited
<b>Paper Size:</b>	5 1/2" x 8 1/2" to 11" x 17"
<b>Paper Weight:</b>	20 lb. Bond-90 lb. Index

### Reduction/Enlargement

<b>Reproduction Ratios:</b>	25%, 50%, 65%, 73%, 78%, 85%, 93%, 121%, 129%, 155%, 200%, 400%
<b>Zoom:</b>	25%-400% in 1% increments

### Auto Reversing Document Feeder

<b>Original Size:</b>	5 1/2" x 8 1/2" to 11" x 17"
<b>Original Weight:</b>	13 lb. Bond-90 lb. Index (simplex) 16 lb.-34 lb. Bond (duplex)
<b>Original Stack Capacity:</b>	100 sheets (20 lb. Bond)
<b>Scan Speed:</b>	72 OPM

### SR810 Finisber:

<b>Shift Tray Stack Capacity:</b>	3,000 sheets
<b>Proof Tray Stack Capacity:</b>	500 sheets
<b>Paper Weight:</b>	14 lb. Bond-80 lb. Cover
<b>Staple Capacity:</b>	100 sheets (20 lb. Bond)
<b>Staple Paper Size:</b>	8 1/2" x 11" to 11" x 17"
<b>Staple Position:</b>	4 Positions (Top, Bottom, 2 Staples, Top Slant)

## Document Server Specifications

<b>Number of Jobs:</b>	Up to 250
<b>Number of Pages:</b>	Up to 5,000
<b>Resolution:</b>	600 dpi, 4 level (Scanning Data) 600 dpi binary (Electronic Data)
<b>User ID:</b>	Max 8 Letters (Alphanumeric)
<b>File Name:</b>	Max 8 Letters (Alphanumeric)
<b>Password:</b>	Max 4 digits (Numeric)

## Accessories

### CD-R/RW Drive Type 850:

<b>Functionality:</b>	Write and read Aficio 1085 document file data from CD-R or CD-RW disk
<b>Disk Memory:</b>	50 files or 500 pages
<b>Speed:</b>	Write-4x Read-20x
<b>Power:</b>	120V/60Hz/15A
<b>Dimensions (WxDxH):</b>	5.8" x 7.8" x 1.7"
<b>Weight:</b>	3.3 lbs.

### Connect Copy Kit Type 850

### Interface PCB Board Type 850

### 11" x 17" Tray Kit Type 850

### Punch Kit Type 850 NA-3 (3-Hole)

### Punch Kit Type 850 NA-2 (2-Hole)

### SR85 Bookletmaker

### SPF-9R Bookletmaker

Ricoh Consumables: For maximum performance and yield, we recommend using genuine RICOH parts and supplies.

Specifications and external appearances are subject to change without notice.

 Printed in U.S.A. on recycled paper because Ricoh cares.

Ricoh is a registered trademark of Ricoh Company, Ltd.  
All other trademarks are the property of their respective owners. © Ricoh Corporation

## Copier Features

Auto Duplex	Original Modes:
Auto Off	Generation Copy,
Auto Paper Select	Pale Original, Photo,
Auto Reduce/Enlarge	Text, Text/Photo
Auto Stamping	Original Orientation Mode
Auto Start	Page Numbering
Auto Tray Switching	Paper Designate (20)
Background Numbering	Print Sample
Batch Mode	Repeat Copy
Booklet/Magazine Mode	Rotate Original
Centering	Sample Set
Chapterization (20)	Save/Delete
Combine Originals	Series Copying
Covers (2,4,8,16)	Size Magnification
Directional Magnification (%)	Slip Sheets
Directional Size	(OHP, Separation)
Magnification (Inch)	Special Paper Display
Double Copy	Tab Copy
Energy Saver Mode	Tandem Print (Option)
Erase Center/Border	Thin Paper Mode
Image Repeat	Three-Side Full Bleed
Image Shift	Touch Panel CRT
Interrupt	(Dual Language)
Job Preset (10)	User Codes
Job Program (25)	(500 Copy/500 Print)
Job Status Indicator	User Stamping
Job Time Calculation	Weekly Timer
Margin Adjustment	
Mixed Size Originals	

## Document Server Features

Booklet and Magazine Mode	Save Printing Conditions
Change File Name	Search by Document
Connect Copy/Print	File Name
Job Preset (10 Jobs)	Set Password
Sample Set	Sort By User ID or Time

## Document Editor Features

Change File Name	File Insertion
Delete File	File Merge
Delete Page	File Save to CD
File Download from CD	Insert Page



EPA 2000 Office Products Partner of the Year (5th consecutive year)  
EPA 2000 Labeling Partner of the Year

Ricoh Corporation has determined that this product meets the Energy Star® guidelines for energy efficiency.

OFFICIAL PRINTER,  
COPIER AND FAX  
OF THE PGA OF AMERICA



**RICOH®**  
Image Communication

Ricoh Corporation, Five Dedrick Place, West Caldwell, NJ 07006  
Phone: (973) 882-2000 Website: <http://www.ricoh-usa.com>

CA-0120C

# digital technology

## **Connect Copy/Connect Print**

Link two Aficio 1085s to effectively double output and achieve speeds up to a remarkable 170 pages-per-minute. With Connect Copy/Connect Print, users have the flexibility to utilize the Aficio 1085 systems in high volume production environments when speed is paramount. This capability

now provides the benefit of having a high volume, cost effective solution at a fraction of the cost of traditional high volume systems. At the same time, these powerful digital imaging systems can serve as back up units for standard "walk-up" applications. Users will benefit from the advantages of having two digital imaging systems that can be used independently.

## **Partners with the Environment**

Not only are these efficient systems in compliance with the Environmental Protection Agency's Energy Star®



Program to reduce energy consumption and minimize

air pollution, but Ricoh, named the EPA 2000 Office Products Partner of the Year, has been recognized for five consecutive years by the U.S. Government for its continued commitment to a healthier, safer environment.

***Let Ricoh handle your diverse business applications by building a system to meet the specific needs and demands of your environment.***



Link two Aficio 1085s to double your output speed up to 170 ppm

**RICOH®**



**EPA 2000 Office Products Partner of the Year (5th consecutive year)**  
**EPA 2000 Labeling Partner of the Year**

Ricoh Corporation has determined that this product meets the Energy Star® guidelines for energy efficiency.



**There is a name synonymous with the business world: Deming.**

Named for Dr. W. Edwards Deming, the Deming Medal Award recognizes corporations and individuals that demonstrate an outstanding commitment to quality control. Ricoh has won two coveted Deming Prizes for quality control.

**OFFICIAL PRINTER,  
COPIER AND FAX  
OF THE PGA OF AMERICA**



Printed in U.S.A. on recycled paper because Ricoh cares.

Ricoh is a registered trademark of Ricoh Company, Ltd.  
All other trademarks are the property of their respective owners. © Ricoh Corporation

**RICOH®**  
**Image Communication**

Ricoh Corporation, Five Dedrick Place, West Caldwell, NJ 07006  
Phone: (973) 882-2000 Website: <http://www.ricoh-usa.com>

CA-0120