

350e  
450e

# Aficio®

## 350e & 450e

*The Right Choice for Your  
Growing Networked Office*



*Digital Technology*

**RICOH®**

# Aficio® 350e & 450e

## Empowered to Make Your Office More Productive and Efficient

*In your business, there's enough juggling to do without having to balance your act between office equipment. Thanks to RICOH® and its advanced digital technology, you can get ahead of the game by performing multiple tasks in unison... saving time, energy and expense. Ricoh, a pioneer in the development and leading manufacturer of cutting-edge digital office equipment, presents two powerful, yet easy to use, imaging solutions for today's technology-driven workplace—the Ricoh Aficio® 350e & 450e Integrated Digital Imaging Systems.*

*Designed on a modular platform to handle your growing business applications, these productivity-packed multi-functional systems epitomize "partnership" by uniting state-of-the-art functions in one affordable solution. Thanks to a space-saving modular design, functions can be added as your business needs evolve and change. And, through precision engineering, they successfully streamline workflow, bringing together unsurpassed digital image quality, seamless network connectivity and maximum communications efficiency.*

### Ricoh Continues To Take Digital Technology To New Heights

Superior image quality. High reliability.

Increased productivity. You get them all with a digital imaging system from Ricoh. With combined copying, faxing, network printing and network scanning capabilities, these innovative products respond with sophisticated digital technologies that enhance productivity.

Ricoh's award-winning Aficio digital product line responds to the increasing demand for seamless image communication, connectivity and shared information... whether it be from across the hall or around the world.

### Ricoh Reliability

Leading-edge Ricoh engineering enhances productivity and meets the demands of every workgroup...

#### **Superior Image Quality:**

Your output will be crisp and clean with 600 dpi resolution, 256 levels of gray scale and five original modes custom-designed for a wide range of original types. But, Ricoh quality doesn't stop there.

#### **Page Order Scanning:**

In addition to streamlining document processing, the optional Automatic Reversing Document Feeder conveniently performs Page Order Scanning, feeding the top page first, resulting in no precount for



# digital technology



Automatic Reversing Document Feeder (ARDF)

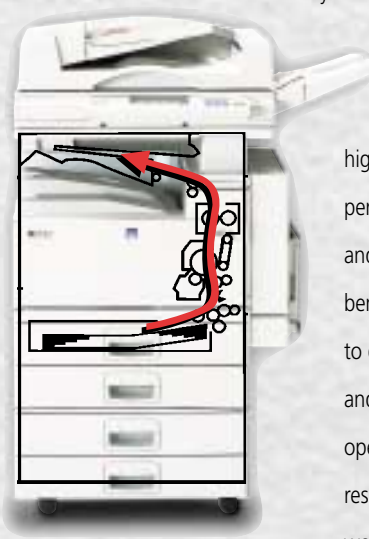
single- to double-sided duplexing or Combine Originals. Another Ricoh innovation that saves you time every step of the way.

### **High Speed Image Compression:**

A patented ABS Binary Image Compression Method ensures high-speed image compression for superb document reproduction and maximized image storage.

### **Reliable Vertical Paper Path:**

With the Aficio 350e & 450e's uniquely-designed vertical paper path, processing is faster and more reliable than ever before. You'll benefit from an especially fast first copy speed and easy misfeed recovery... especially important in today's multiple-user environments.



Short vertical paper path

### **Trayless Vertical Duplex System:**

A vertical paper path increases productivity and reliability when it comes to duplexing as well. Thanks to the stackless design and interleave duplex method, you can reliably perform limitless duplexing jobs for sizes as large as 11" x 17", whether you're copying, faxing or printing.

### **Flash ROM Upgrading:**

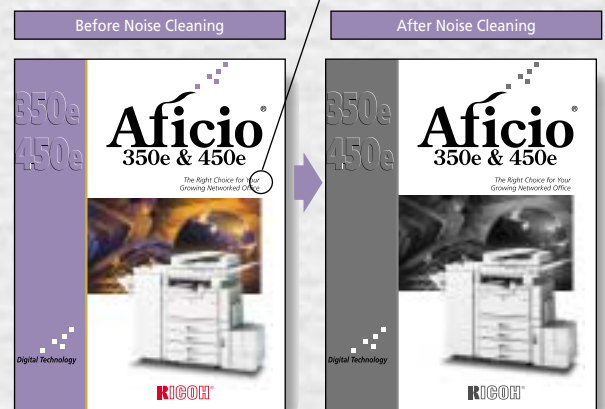
It's a snap to install the latest versions of software and firmware into the Aficio 350e & 450e—all your Ricoh authorized technician has to do is simply insert a special credit card-like device and upgrades are performed 1-2-3. Quick serviceability means maximum uptime and the latest in functionality.

### **Dual Laser Beams:**

Because these highly productive systems perform the laser scan and subscan at once, you'll benefit from faster laser to drum writing speed and a marked decrease in operating noise levels, resulting in a quieter work environment.

### **Automatic Noise Cleaning System:**

Image quality is heightened with this technological revolution. The Aficio 350e & 450e incorporate a patented Automatic Noise Cleaning System to reproduce crisp, clear output, even with generation and recycled paper stock originals. Unwanted background noise and other imperfections on the original are sensed and removed, producing output that's even better than the original.

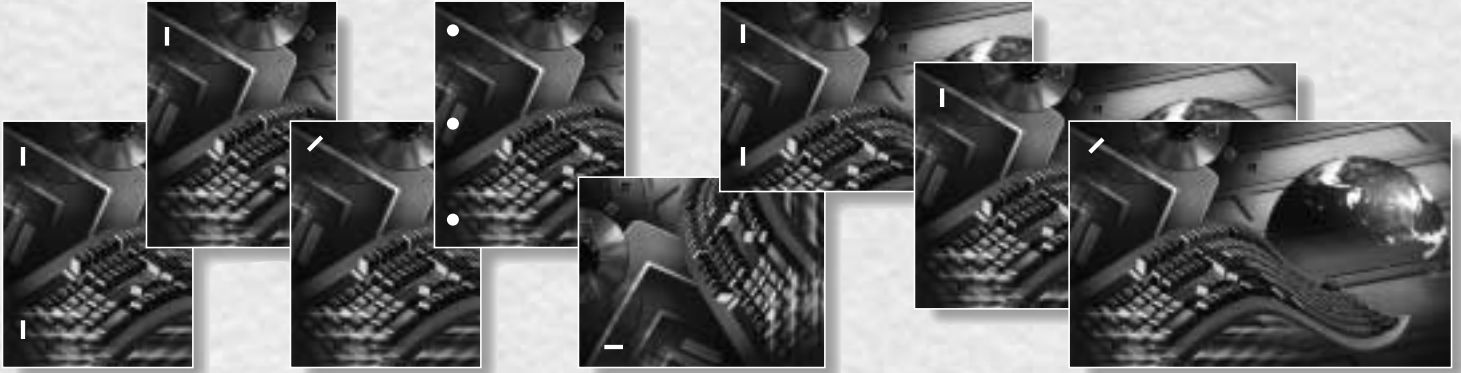


Original shows a background imperfection.

Output produced from original has the imperfection eliminated for superior quality.

### **Feed Reverse Roller System:**

This innovative paper feed system prevents double sheet feeding from the paper trays to eliminate potential misfeeds. And, of course, reduced misfeeds means increased uptime for you!



3,000 Sheet Finisher

### Multi-Functional Means Endless Possibilities

The Aficio 350e & 450e integrate all of your document processing and communication needs, yet can be configured any way you like. And, since each function has separate processing memory and storage capacity, all components can effectively be utilized in concert. That means maximum uptime and minimal waiting.

Add to that a wide choice of options and you can further increase your efficiency by designating your output to the One-Bin Tray, External Tray and 1,000 or 3,000-sheet Finisher with multiple staple positions.

Ricoh's 3-hole punch option is just as impressive, allowing for on-line 3-hole punch capability for professionally finished

documents. Since copies are already punched by the time they reach the exit tray, there is no waiting. Sets can be distributed immediately, dramatically increasing productivity.

### Network Printing at 35 or 45 Pages per Minute

Full-service convenience can be yours when incorporating laser quality printing with 600 dpi resolution for seamless network connectivity. Support is standard for PCL5e/PCL6 and an option for genuine Adobe® PostScript® 3™, ensuring compatibility with all of today's most popular applications.

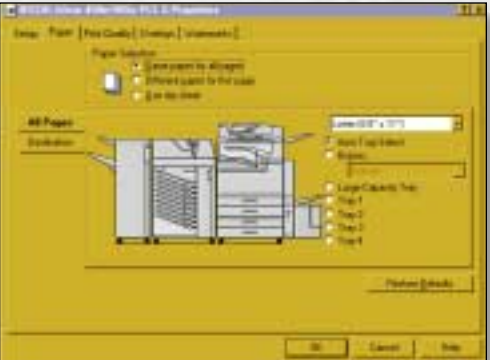
### High Performance Fax Capabilities

The Ricoh Aficio 350e & 450e stand up to the most powerful fax systems on the market today. Enjoy fast 3-second per page transmission speed via a standard 33.6 Kbps modem, with incoming faxes printed at full engine speed (35 or 45 pages per minute)—twice as fast as most stand-alone faxes.



### Partners with the Environment

Not only are these efficient systems in compliance with the Environmental Protection Agency's Energy Star® Program to reduce energy consumption and minimize air pollution, but Ricoh, named the 1999 Imaging Partner of the Year, has received recognition for four consecutive years by the U.S. Government for its continued commitment to a healthier, safer environment.



**The Aficio 350e & 450e Integrated Digital Imaging Systems from Ricoh... The Right Choice for Your Growing Networked Office.**



**Aficio**<sup>®</sup>  
350e & 450e

*The Right Choice for Your  
Growing Networked Office!*

**RICOH**<sup>®</sup>



Adobe® PostScript® 3™



**EPA 2000 Office Equipment Partner of the Year (5th consecutive year)**  
**EPA 2000 Labeling Partner of the Year**

Ricoh Corporation has determined that this product meets the Energy Star® guidelines for energy efficiency.



**There is a name synonymous with the business world: Deming.**

Named for Dr. W. Edwards Deming, the Deming Medal Award recognizes corporations and individuals that demonstrate an outstanding commitment to quality control. Ricoh has won two coveted Deming Prizes for quality control.

**OFFICIAL COPIER AND FAX  
OF THE PGA OF AMERICA**



Printed in U.S.A. on recycled paper because Ricoh cares.

Ricoh is a registered trademark of Ricoh Company, Ltd.  
All other trademarks are the property of their respective owners. © Ricoh Corporation

**RICOH®**  
**Image Communication**

Ricoh Corporation, Five Dedrick Place, West Caldwell, NJ 07006  
Phone: (973) 882-2000 Website: <http://www.ricoh-usa.com>

CA-0001