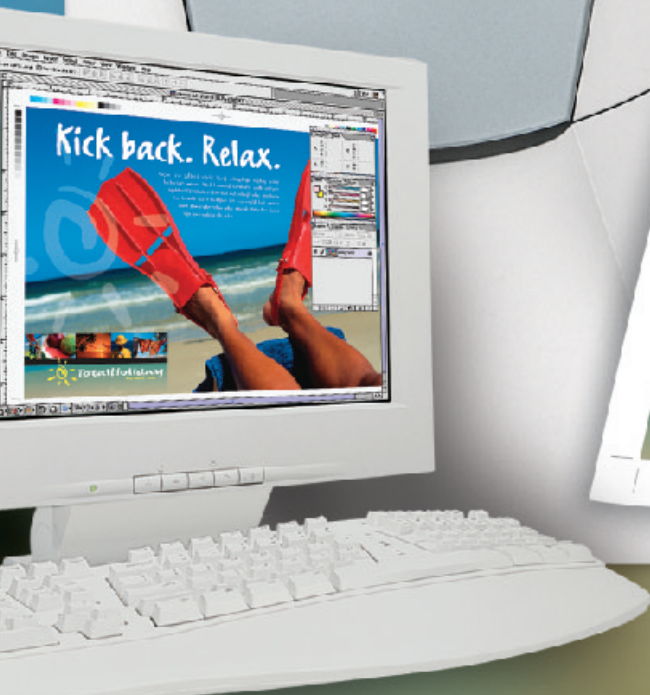


Canon

ColorPASS-Z650



ColorPASS-Z650

DIGITAL COLOR PRINTING THAT PROVIDES AN ENTRYWAY TO NEW COLOR-CRITICAL MARKETS.

Check your preconceptions at the door. Canon's ColorPASS-Z650 is here—a dedicated color server that enhances the power of Canon's new CLC 1140 and CLC 1180. A new paradigm for mid-range color printing, the ColorPASS-Z650 represents a shift in the balance of power, boldly crossing the line that separates digital technology and traditional offset.

BE FRUITFUL AND MULTIPLY PROFITS.

Connected to the CLC 1140 or CLC 1180, Canon's ColorPASS-Z650 brings unlimited revenue potential to graphic arts and print-production environments. For on-demand printing, known for its flexibility and fast turnaround, the ColorPASS-Z650 promises a level of color quality and consistency once reserved for high-level commercial printers. Fueled by a powerful Intel® Pentium® III 1GHz processor, 256MB of memory, and a 40GB hard drive, the ColorPASS-Z650 crunches through full-color jobs, delivering exceptional image quality at remarkable speed. So now, output such as intermediate proofs can be processed easily and accurately, in virtually no time at all.

YOU COULDN'T MANAGE AS WELL WITHOUT IT.

Canon's ColorPASS-Z650's open architecture clears the way for powerful, networked color-management solutions with limitless applications. The ColorWise® 3 color-management system provides a wide array of color correction and calibration tools for achieving consistent color from all applications and platforms. ColorCal,® a scanner-based calibration process, employs a two-step method to compensate for potential measurement inconsistencies, thereby ensuring optimum calibration accuracy. Post-RIP Calibration eliminates the need to reRIP an entire job by applying all calibration properties after rasterization, which results in greater productivity. What's more, with Auto Gray, the gray balance between multiple devices is adjusted automatically, for the closest possible visual match.

EXTREME FLEXIBILITY. EXTREME CONTROL. EXCLUSIVE WITH THE GRAPHIC ARTS PACKAGE OPTION.

The amazing potential of all this innovation is further enhanced by the optional Graphic Arts Package, a specialized set of productivity tools that integrates into

high-end, prepress workflows for exceptional control over output quality and greater accuracy in proofing. Features included are Hot Folders, Halftone Screening and Paper Simulation, Spot-On,® Auto-trapping, Unlimited Separations, TIFF/IT File Support, and Soft Proofing.

GETTING EVERYONE ON THE SAME DIGITAL PAGE.

Advanced network-management and delivery capabilities via Fiery® Scan™ technology are provided by the latest NetWise™ 3 open architecture, Scan-to-Command WorkStation,™ Scan-to-E-mail and Fiery Remote Scan via the RDF. With Job Submission, you're able to send files in PDF format to the CLC via E-mail from any location. There's even a new Command WorkStation 4, which automatically detects all ColorPASS servers on your network, so you can manage them easily from the same window. Best of all, prepress time is reduced significantly thanks to multiuser access, which enables all users to be linked to the entire production process, from any desktop PC.

ColorPASS-Z650 Specifications

Hardware

- Canon ColorPASS-Z650 Motherboard
- Intel Pentium III @ 1GHz CPU
- 256MB SDRAM
- 100MHz System Bus
- 512K level two cache
- 40GB hard disk
- Internal Zip® drive (250MB)
- IDE CD-ROM Drive

CLCs Supported

- CLC 1100/1120/1140/1150/1180*

Document Printing Features

- RIP-While-Print™
- Continuous Print™
- Reverse order printing
- Electronic collation
- Save fast reprint
- Document full-screen preview, job merging, and editing
- Error-free printing
- Auto duplexing support**
- Sorting/stapling support**
- Archiving
- Load balancing
- Transparency interleaving
- Slip-sheeting
- Media server
- DocBuilder™ Pro (optional)
- Tray alignment
- Custom page sizes
- PDF editing with PitStop software (optional)
- Imposition (optional)
- E-mail Job Submission
- PPML Support

Networking/Connectivity

- Simultaneous auto-switching protocols:
 - EtherTalk®, TCP/IP, Novell® IPX/SPX,™
 - 802.2, 802.3, Ethernet II and SNAP Frame Types, Novell NDS™-compliant

Autosensing ports

- RJ-45
- 10/100Base-T standard support
- Optional Token Ring support
- Peer-to-peer Windows® printing
- Automatic IP configuration
- IPP 1.1 (Internet Print Protocol)
- Port 9100 support
- Canon NDP5 Gateway

Page Descriptions

- Adobe® PostScript® 3™

Language Fonts

- PDF Printing (PDF 1.3)
- 136 Adobe Type 1 Roman PostScript scalable fonts

Resolution

- Continuous-tone at an appearance of 800 x 400 dpi at all page sizes supported by the copier

Scanning

- Fiery Scan and Fiery Remote Scan (RDF Support) TWAIN-compliant plug-in module
 - Adobe Photoshop® 6.0 (Macintosh® and Windows)
 - Adobe Photoshop LE 5.x (Macintosh and Windows)
 - Adobe Acrobat® 5.0 (Windows only)
 - imageWARE™ Document Manager 2001 Edition
- Capable of scanning up to tabloid size at 400 x 400 dpi
- Scan-to-E-mail
- Scan-to-Command WorkStation
- Scan-to-Mail Box

Utilities

- Fiery Link™
- WebTools™
- Fiery Scan
- Fiery FreeForm™

- Fiery Downloader™
- Fiery Spooler
- Job Log
- Fiery Driver™ (with Automatic Configurator)
- Command WorkStation 4 Software Kit
- Member Printing

Color Management

- ColorWise 3
 - Color Rendering Dictionaries
 - Photo
 - Presentation
 - Absolute Colorimetric
 - Relative Colorimetric
 - ColorWise Pro Tools
 - Fiery Print Calibrator™ - easier calibration
 - Color Editor - customizing curves
 - Profile Manager - supporting ICC profiles
 - Color Setup - default color settings
 - Color Charts and reference pages
 - RGB separation
 - Spot Color management - PANTONE® calibrated
 - Trapping and overprinting
 - Automatic black overprinting
 - Independent RGB, PANTONE, and CMYK controls
 - Pure black text/graphics
 - Gray Component Replacement (GCR) control
 - Spot Color in PDF
 - Image Smoothing

Press Simulation

- Quick Simulation - adjusts toner density
- Full Simulation - adjusts toner density and hue
- Full Simulation with GCR
- Support for SWOP, Euroscale, DIC printing standards and others through ICC profiles
- Support for custom simulation targets
- Simulation on a per-job basis

Calibration

- Default calibration for great out-of-the-box color
- Color Cal
- AutoCal 2

- Fiery Print Calibrator
- Calibration on a per-job basis
- Auto Gray
- PostRaster Calibration

Memory Management

- ECT compression (off support)

Optional Hardware/Software

- Token Ring Kit
- Advanced Controller Interface Kit
 - Flat-screen monitor
 - Keyboard and mouse
- DocBuilder Pro Licenses
 - One license
 - Three licenses
 - Seven licenses
- EFI™ Densitometer
- Graphic Arts Feature Set
 - Halftone Screening
 - Hot Folders
 - Spot-On
 - Auto Trapping
 - TIFF/IT Support
 - Paper Simulation
 - Multiple Plate Separation
 - Soft Proofing

Power Supply

- Auto-switching 110/220V, 50/60Hz

Power Consumption

- 200W
- 682 BTU/Hr

Dimensions

- 20-1/2" x 19" x 7-1/2"
- (512.5mm x 475mm x 187.5mm)

Weight

- 55 lb. (24.75kg)

* Press-like Density Curve, Tag Bit Support and larger imageable are only supported when connected to the CLC 1140 and CLC 1180.

** Copier must support functionality.

Intel and Pentium are registered trademarks of Intel Corporation. ColorWise, Fiery, RIP-While-Print and Color Cal are registered trademarks of Electronics for Imaging, Inc. in the U.S. Patent and Trademark Office and certain other foreign jurisdictions. Spot-On, Command WorkStation, Continuous Print, DocBuilder Pro, Fiery Link, WebTools, Fiery Scan, Net Wise, Fiery FreeForm, Fiery Downloader, Fiery Driver, NetWise, Fiery Print Calibrator and EFI are trademarks of Electronics for Imaging, Inc. Zip is a trademark of Iomega Corporation registered in the U.S. Patent and Trademarks Office and in other countries. EtherTalk and Macintosh are trademarks of Apple Computer, Inc., registered in the U.S. and other countries. Novell and NDS are registered trademarks in the United States and other countries, and IPX/SPX is a trademark of Novell, Inc. Windows is a registered trademark of Microsoft Corporation in the United States and/or other countries. Adobe, PostScript, Photoshop, and Acrobat are registered trademarks of Adobe Systems Incorporated in the United States and/or other countries. PANTONE is a registered trademark of Pantone, Inc. Canon and ColorPASS are registered trademarks, and Canon Know How is a trademark of Canon, Inc. IMAGEWARE is a trademark, and IMAGEANYWARE is a service mark of Canon U.S.A., Inc. All other terms and product names may be trademarks or registered trademarks of their respective companies and are hereby acknowledged.

All specifications are subject to change without notice.

0029W007

0401-CPZ650-40M



PRINTED ON RECYCLED
PAPER IN THE U.S.A.

Canon KNOW HOW™

1-800-OK-CANON
www.usa.canon.com

Canon U.S.A., Inc.
One Canon Plaza
Lake Success, NY 11042

