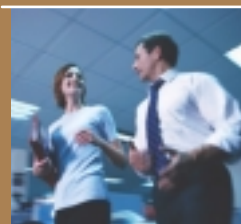
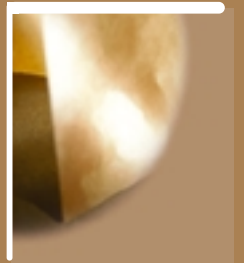
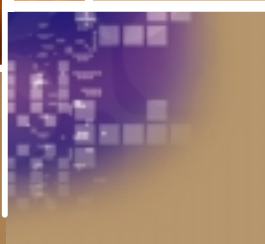
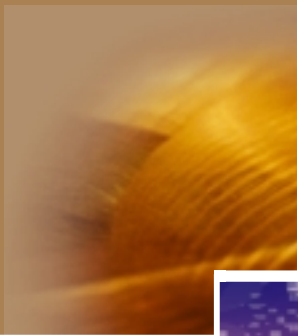


Canon

imageRUNNER™
5000i



COMMUNICATE WITHOUT RESTRICTIONS. A New Breed of Office Equipment

At face value, the Canon imageRUNNER 5000i has all the physical attributes of a typical multifunction device. Looks, however, are about the only characteristic the imageRUNNER 5000i has in common with its peers. Yes, the 50-page-per-minute imageRUNNER 5000i prints, copies, and scans, but it also sets a new standard for the way information is communicated in today's workplace. Using the existing infrastructure of corporate networks and the Internet as its medium, the imageRUNNER 5000i empowers users to distribute hard-copy and electronic information to multiple destinations, in multiple formats, in one operation, from one single platform. No other device comes close to matching the breadth of features that come standard with the imageRUNNER 5000i.

Manage information regardless of form, content, or location.

The Canon imageRUNNER 5000i can be accurately described as a central communications hub for managing, printing, and sharing information in the networked office. With an architectural design that enables independent hardware and software components to function as one congruous system, the imageRUNNER 5000i represents a new source of freedom for its users—the freedom to work with information the way they choose to—without being constrained by the limitations of incompatible or proprietary solutions inhabiting many of today's offices.



UNIVERSAL SEND™ Information Sharing Without Limits

Canon's Universal Send technology transforms the imageRUNNER 5000i into a digital communications center. As a shared networked scanning solution, the imageRUNNER 5000i's Universal Send capabilities overcome functional limitations of today's office equipment to perform mass, multiple-routed document distribution tasks in one simple operation through an easy-to-use, full-color, touch-screen interface. Moreover, all sending modes perform at a level equal or superior to what users have come to expect from dedicated devices. Universal Send functions, all of which are standard on the imageRUNNER 5000i, include:

Send via E-mail—Send scanned documents as E-mail attachments in TIFF, multipage TIFF, or PDF formats.

Send via Internet Fax—Bypass the Public Switched Telephone Network and send scanned documents over the Internet at no cost.

Send to a File Server—Store scanned data in a centralized directory for archival purposes or sharing within workgroups (FTP, Windows®, NetWare®).

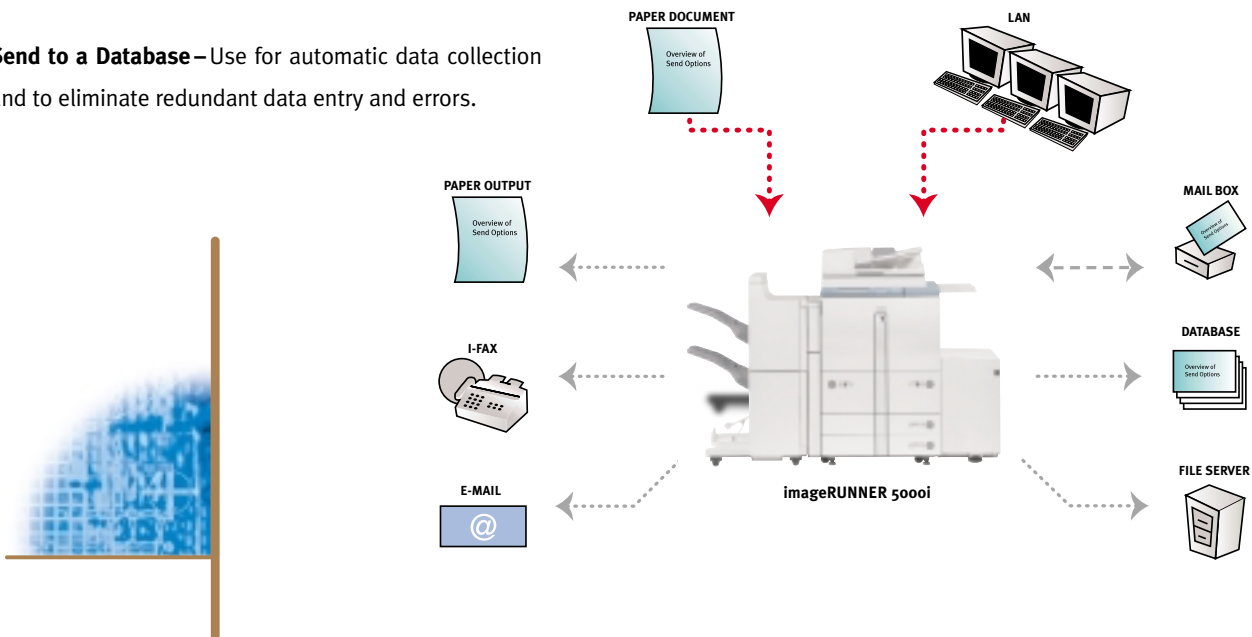
Send to a Mail Box—Organize and archive digital information in up to 100 Mail Boxes. Store files for sharing, merging, printing, or sending at a later time.

Send to a Database—Use for automatic data collection and to eliminate redundant data entry and errors.

The advanced functions of Universal Send allow users to communicate, manage, and share information as never before, with no additional server hardware or software required. Universal Send also works simultaneously with the imageRUNNER 5000i's Print and Copy functions for enhanced multitasking functionality.

In addition, every imageRUNNER 5000i comes bundled with a 20-user version of eCopy™ Desktop™ software. With Desktop, documents sent from an imageRUNNER 5000i to a local or shared folder can be retrieved and transformed into information that can be easily integrated into existing business applications. Documents can be combined, annotated or converted to editable text, then distributed via E-mail or saved to a company's database, filing system, or document management application.

The imageRUNNER 5000i is also tightly integrated with Canon's imageWARE Document Manager, a centralized document management system suitable for small offices to large enterprises. Using the imageRUNNER 5000i's Send to Database function, hard-copy documents can be digitized and sent to a centralized database for enterprise-wide access.



NEVER BEFORE HAS ONE DEVICE DONE SO MUCH FOR SO MANY.

The only thing more impressive than the technology Canon puts into the imageRUNNER 5000i is the productivity you get out of it—never asking you to sacrifice reliability and ease-of-use for high performance.

Copy Functions

At the heart of every imageRUNNER 5000i is a 5.1GB Image Server. This internal hard disk hosts several unique applications for driving enhanced document output and information management tasks. Examples of this functionality include:

Copy Reservation: This function allows users to store up to five copy jobs in memory while current copy or print jobs are being processed.

Job Done Notification: The imageRUNNER 5000i notifies users via E-mail when their Copy or Send job is complete, eliminating any guesswork about the status of submitted work.

Remote and Cascade Copying: These functions enhance copying productivity by enabling users to connect with additional imageRUNNER 5000i units on the network. Users can input a job locally for output to another, perhaps differently configured imageRUNNER 5000i on the network, or split a heavy workload simultaneously between two imageRUNNER 5000i devices for double the productivity.

Job Build: This feature permits the building of jobs from disparate originals, easily integrating documents scanned through the document feeder with those directly placed on the glass.

Scan-Once-Print-Many and Auto Image Orientation: These functions minimize scanner wear and tear while rotating scanned images to match the direction of the available paper supply.



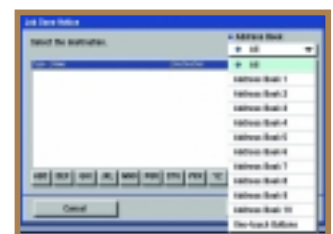
Main Copy Menu



Duplex Options Menu



Special Features Menu



Job Done Notice Menu



quality

Quality



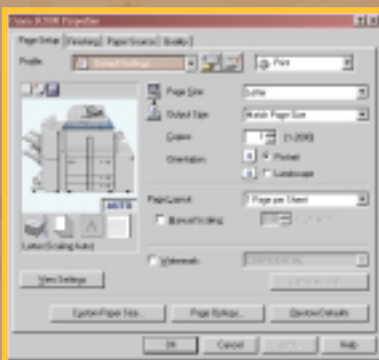
Network Printer

One of the reasons why Canon has become the industry-leading provider of network connected devices is because of our intuitive printer driver software. imageRUNNER 5000i users will find that Canon's graphical printer driver software is extremely easy to use, even with no prior experience using a network-connected device. Through an intuitive, graphically enhanced driver interface, users have immediate access to all the imageRUNNER 5000i's output functions directly from their desktops.

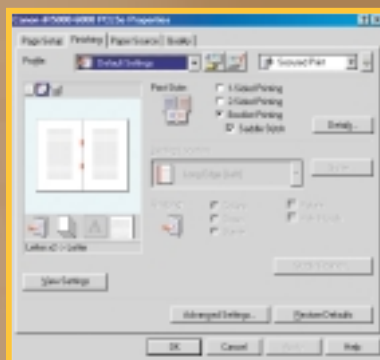
Page Composer: This feature enables a user to combine and print documents that were created in different applications as a single document. Prior to printing, the user can preview and manipulate the merged document through a thumbnail view and fully utilize the finishing capabilities of the imageRUNNER 5000i.

Secured Print Function: When the Secured Print function is selected from the print driver dialogue box, the job will output only upon entry of the user's password. This is useful for printing confidential documents, or for the temporary storage of documents for printing at a more convenient time.

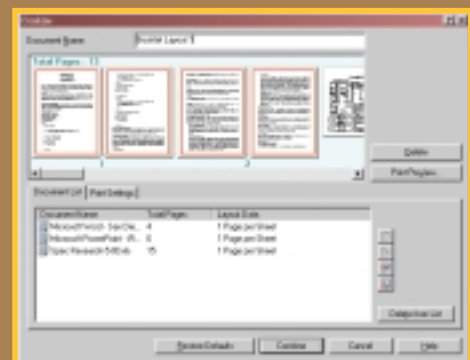
Mail Box Printing: The imageRUNNER 5000i features 100 virtual Mail Boxes that provide a convenient way to store documents and scanned images for later processing. Stored images and documents may be combined and printed as one, or sent electronically to a variety of destinations. User Mail Boxes can be password-protected for security, and accessed either at the imageRUNNER 5000i or from a user's desktop via Canon's Remote UI™ interface.



Driver Page Setup Tab



Driver Finishing Tab



Canon Page Composer Screen

Connectivity Software Simplified

Like all Canon networked systems, the imageRUNNER 5000i comes equipped with a comprehensive set of system utilities designed to simplify operation and management for both end-users and network administrators. Through these tools, Canon eases device installation and network management while supplying a level of device status and job-management capabilities unmatched in the industry. A description of these utilities is outlined below:

Remote UI™—Canon’s Remote UI utility transforms a user’s desktop into a remote access center for the imageRUNNER 5000i. By entering the IP address of the device from a standard web browser, users gain instant access to device status and settings, job-management functions, User Mail Boxes, and more—depending on a user’s access privileges as assigned by the administrator.

NetSpot® Console—NetSpot Console is a web-based utility capable of installing and managing Canon networked systems, including the imageRUNNER 5000i, on most customer networks. Through NetSpot Console, network administrators are provided a convenient, platform-independent utility to install and manage Canon devices from anywhere within the enterprise. In addition to basic installation support, NetSpot Console also delivers administrator alerts, notifying administrators of device status conditions such as low toner, paper jams, and others. For added convenience, NetSpot Console is also capable of managing third-party printers complying with the standard Printer MIB, thereby consolidating network device management via one utility.

NetSpot Job Monitor—To manage and track the progress of print jobs, Canon supplies NetSpot Job Monitor. NetSpot Job Monitor runs as an automated task in the Windows System Tray, and can be configured to report job conditions based on administrator or end-user preferences. Significant to NetSpot Job Monitor is its ability to deliver end-of-job notification to end-users, ensuring that they are always informed of the completion of submitted work.

NetSpot Accountant*—NetSpot Accountant is an optional utility available for the imageRUNNER 5000i that is capable of providing comprehensive job tracking and analysis for cost accounting and work-flow optimization. Using NetSpot Accountant, network administrators can track all activity at the imageRUNNER 5000i, including copying, printing, and scanning, and billing internal or external clients for device utilization. A wide range of configuration settings are available for NetSpot Accountant, enabling administrators to track device usage in a myriad of ways. NetSpot Accountant is ideal for legal customers, or any customer who desires to account for imageRUNNER 5000i device utilization.

Enterprise-management Integration—In addition to the NetSpot utilities mentioned, Canon also supplies plug-in modules for the most popular enterprise-management applications in use today. Supported applications include Microsoft® Management Console, CA-Unicenter, HP® OpenView®, Tivoli® NetView®, and BMC Patrol®. Through these plug-ins, Canon permits easy management of imageRUNNER 5000i and other Canon networked devices from directly within the enterprise-management system console.

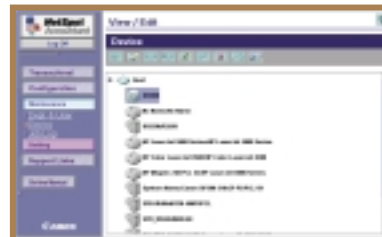
* Check with your local Canon-authorized Dealer for availability.



Remote UI



NetSpot Job Monitor —
Spooler Job Tab



NetSpot Accountant Device List Display

mid-volume

A Professional Finish

While most office copiers and printers are content to deliver simple stapling, Canon's imageRUNNER 5000i raises expectations by offering the most extensive level of document finishing in its class. The imageRUNNER 5000i offers a choice of two finishers, both designed to enhance productivity and facilitate the delivery of the most professional-looking documents.



Saddle Finisher-F2

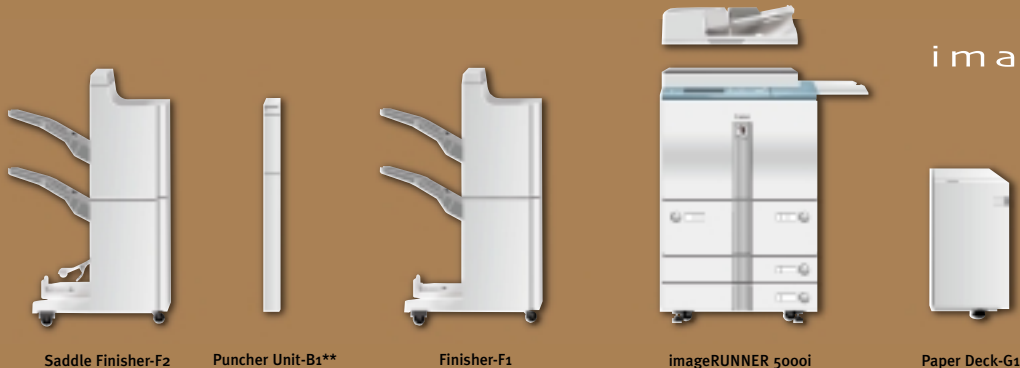
The imageRUNNER 5000i Stapler Stacker offers two trays to handle statement- to ledger-sized output. With a total output capacity of 2,000 sheets, the Stapler Stacker can handle even the longest print or copy runs. With the ability to staple in any corner of the page, or place multiple staples in either margin, the imageRUNNER 5000i finishes the job in style.

The imageRUNNER 5000i also supports the creation of booklets from hard-copy or electronic originals with its optional Saddle Finisher. The Saddle Finisher offers three

trays, two dedicated for stapled output, and a third dedicated to saddle-stitched booklets. Offering a total output capacity of 2,300 sheets (2,000 in top trays, 300 in saddle-stitch tray), the Saddle Finisher offers the same capabilities as the Stapler Stacker.

For added finishing capabilities, Canon also offers an optional hole-punching unit for both imageRUNNER 5000i Finishers. With the ability to deliver both two-and three-hole-punched output, the imageRUNNER 5000i is one of the few systems capable of punching letter, legal, and 11" x 17" paper sizes.





Saddle Finisher-F2

Puncher Unit-B1**

Finisher-F1

imageRUNNER 5000i

Paper Deck-G1

ImageRUNNER 5000i Specifications

Type:	Digital, Multifunction Imaging System
Imaging System:	Laser Dry Electrostatic Transfer
Developing System:	Dry Monocomponent Toner Projection
Image Server Memory:	Standard 192MB RAM + 5.1GB HDD (Max. Capacity: Approximately 4,000 Originals)
First-copy Time:	3.8 Seconds from Platen Glass 5.1 Seconds from ADF
Warm-up Time:	5 Minutes or Less
Acceptable Originals:	Sheets, Books, 3-dimensional Items (Up to 4.4 lb.)
Max. Original Size:	11" x 17" (Ledger)
Max. Copy Size:	11" x 17" (Ledger)
Min. Copy Size:	4-1/8" x 5-7/8"
Max. Mail Boxes Supported:	100
Max. Copy Reservation:	5 Jobs
Copy/Scanning Resolution:	600 dpi x 600 dpi 600 dpi x 600 dpi 2400 dpi x 600 dpi Interpolated
Printing Resolution:	256 gradations of gray
Half-tone:	50 cpm (Letter)
Copy Speed:	39 cpm (Letter-R) 36 cpm (Legal) 30 cpm (Ledger)
Duplexing:	Standard Automatic Trayless Duplexing
Magnification Reduction/Enlargement:	25% to 400% in 1% Increments
Paper Supply Standard:	Dual Front-loading Trays (1,500 Sheets Each) Dual Front-loading Cassettes (550 Sheets Each) 50-sheet Stack Bypass 3,500-sheet Paper Deck (Total: 7,650 Sheets)
Optional:	
Multiple Copies:	1 to 999
Paper Weights:	17 to 24 lb. Bond (550-sheet Cassettes) 17 to 110 lb. Index (Manual Bypass, 1,500-sheet Drawers and 3,500-sheet Optional Paper Deck-G1)
Dimensions (H x W x D):	44-3/4" x 25-3/8" x 29-1/4" (1,136mm x 643mm x 743mm)
Weight:	462 lb. (210kg)

Supplies

Drum:	Amorphous Silicon – Estimated Yield: 3,000,000 Impressions
Maximum Duty Cycle:	200,000 Impressions per Month
Toner:	Magnetic Negative Toner – Estimated Yield: 33,000 Images (at 6% Coverage)

Communication Interface

Topology:	Ethernet
Speed:	10/100 Mbps Ethernet
Protocols Supported:	TCP/IP, IPX/SPX™, EtherTalk

Networked Interface Connections:	10/100Base-T (RJ-45)
Sending Functions	
Sending Methods:	E-mail, I-fax, Database (Salutation), File Server (IPX, FTP, SMB)
Address Book Capacity:	Maximum 1,800
File Format:	Single Page TIFF, Multipage TIFF, PDF
(E-mail, Database File Server)	Statement to Ledger
Sending Sizes:	200 x 100 dpi, 200 x 200 dpi
Scanline Density:	200 x 400 dpi, 400 x 400 dpi

ACCESSORIES**Automatic Document Feeder (Standard)**

Acceptable Originals:	Statement to Ledger
Capacity:	100 Sheets (Letter/20 lb.)
Max. Paper Weight:	Up to 32 lb. Bond (Letter)

Network Multi-PDL Printer Kit-A2 (Standard)

Processor:	Canon Custom Processor—Shared
RAM:	192MB (Std./Max.)—Shared
Hard Disk:	5.1GB
PDL Support:	PCL® 5e, PCL® 6, PostScript® 3 Emulation
Internal Fonts:	136 PostScript Fonts 117 Adobe® Type Fonts 19 TrueType® Fonts 80 PCL Roman Fonts 32 PCL Bar-code Fonts
Interface Connections:	RJ-45 (10/100Base-T) IEEE 1284 (Compatibility: Nibble, Byte and ECP Mode) Token Ring (Optional Card)
Protocol Stacks:	IPX/SPX: 802.2, 802.3, Ethernet II, 802.2 SNAP TCP/IP: SENS for Tornado from WindRiver AppleTalk®: 802.2 SNAP and AppleTalk Phase II Only
Network OS:	Novell® NetWare® v.3.2, 4.1, 4.11, 4.2, 5 (IPX/SPX) Windows® 95/98 (TCP/IP) Windows NT® 4.0 (TCP/IP) Windows® 2000 (TCP/IP) Solaris™ 1.x, 2.5 or Later (TCP/IP) Apple® System 7.5 or Higher (DDP)

Finisher-F1 (Optional)

Number of Trays:	2 Trays
Tray Capacity:	
Top Tray:	1,000 Sheets (Letter) 500 Sheets (Ledger) Offset Stacking: Max. 30 Sets (All Sizes)
Lower Tray:	1,000 Sheets (Letter) 500 Sheets (Ledger) Offset Stacking: Max. 30 Sets (All Sizes)

Staple Position:	1- Top Corner 2- Side Margin
Max. Stapling Capacity:	50 Sheets (Letter/Statement) 30 Sheets (Letter-R/Legal/Ledger) Directly From Main Unit
Power Source:	41-3/8" x 26-3/8" x 24-1/4" (1,052mm x 669mm x 614mm)
Dimensions (H x W x D):	70.5 lb. (32kg)
Weight:	

Saddle Finisher-F2 (Optional)

Number of Trays:	2 Trays
Tray Capacity:	
Top Tray:	1,000 Sheets (Letter) 500 Sheets (Ledger) Offset Stacking: Max. 30 Sets (w/Staple) (All Sizes)
Lower Tray:	1,000 Sheets (Letter) 500 Sheets (Ledger) Offset Stacking: Max. 30 Sets (w/Staple) (All Sizes)
Saddle-stitch Tray:	300 Sheets
Staple Position:	1- Top Corner 2- Side Margin
Max. Stapling Capacity:	50 Sheets (Letter/Statement) 30 Sheets (Letter-R/Legal/Ledger)
Saddle-stitch Tray Stapling Capacity:	15 Sheets
Folding:	V-folding Standard
Power Source:	Directly From Main Unit
Dimensions (H x W x D):	41-3/8" x 26-3/8" x 24-1/4" (1,052mm x 669mm x 614mm)
Weight:	114 lb. (52kg)

Puncher Unit-B1 (Optional)**

Max. Paper Weight:	Up to 110 lb. Index
Punch Types:	2-hole/3-hole (Auto Change) 3-hole (Letter/Ledger) 2-hole (Legal/Letter-R)
Punch Dust Stock:	Approximately 3,000 Sheets
Power Source:	Directly From Main Unit
Dimensions (H x W x D):	34-7/8" x 3" x 24-1/4" (886mm x 75.5mm x 614mm)
Weight:	11.9 lb. (5.4kg)

Paper Deck-G1

Paper Capacity:	3,500 Sheets
Paper Size:	Letter
Paper Weight:	17 lb. Bond to 110 lb. Index
Power Source:	Directly From Main Unit
Dimensions (H x W x D):	20-1/2" x 12-3/4" x 33" (519mm x 323mm x 583mm)
Weight:	90.3 lb. (41kg)

* Check with your local Canon-authorized Dealer for availability.

** Puncher Unit-B1 can only be used with the Finisher-F1 and Saddle Finisher-F2.

As an ENERGY STAR® Partner, Canon U.S.A., Inc. has determined that this product meets the ENERGY STAR® guidelines for energy efficiency. The ENERGY STAR name is a registered trademark of the U.S. Environmental Protection Agency. HP, PCL and OpenView are registered trademarks of Hewlett-Packard Company. Adobe and PostScript are registered trademarks of Adobe Systems Incorporated. Microsoft, Windows and Windows NT are registered trademarks of Microsoft Corporation in the United States and/or other countries. TrueType, AppleTalk and Apple are registered trademarks of Apple Computer, Inc. Novell and NetWare are registered trademarks, and IPX/SPX is a trademark of Novell, Inc. Solaris is a trademark of Sun Microsystems, Inc. eCopy and Desktop are trademarks of eCopy, Inc. Tivoli and NetView are registered trademarks of Tivoli Systems Inc. in the United States, other countries, or both. Patrol is a registered trademark of BMC Software, Inc. Canon and NetSpot are registered trademarks, and IMAGERUNNER, Canon Know How and the GENUINE logo are trademarks of Canon Inc. IMAGEANYWARE is a service mark, and Universal Send and Remote UI are trademarks of Canon U.S.A., Inc. All other terms and product names may be trademarks or registered trademarks of their respective owners, and are hereby acknowledged.

Specifications subject to change without notice.

0024W137

1001-IR5000i-100M

PRINTED ON RECYCLED
PAPER IN THE U.S.A.
KNOW HOW™
1-800-OK-CANON
www.usa.canon.com
Canon U.S.A., Inc.
One Canon Plaza
Lake Success, NY 11042