

Just

Point

And

Click

To

Print

Collate

Stack

Fold

View

Scan

Stamp

Enlarge

Reduce

Distribute

Send

Track

Manage

Produce. . .



Starprint
KIP 4000 Series

Starprint *4000, 4050 STF, 4080 STF*



Expandable, modular, designed for growth

The Starprint 4000 series printer and systems are modular, expandable, and designed for growth. These modular systems can be purchased as a Starprint printer, Starprint copier/printer, or a complete Starprint scan-to-file (STF) system.

Each configuration within the 4000 STF series comes with different input copying and scanning speeds to choose from, depending on your budget and production needs. Whether you require low or mid volume copying and scanning KIP has a system designed for you.

Printing System: Starprint 4000

The Starprint 4000 network CAD printer is a popular choice for architects and engineers. This printer has an embedded dual-processor PC based Powerprint controller that processes files in blazing RIP times and maintains the print queue. The Starprint 4000 printer is field upgradeable to a printer/copier system, or a printer/copier/scan-to-file system.

Starprint 4000 network CAD printer features:

- ◆ Dual-processor embedded controller
- ◆ 400 dpi razor sharp output
- ◆ Fastest RIP on the planet
- ◆ Field upgradeable

Copying and Printing System: 4050 CP and 4080 CP

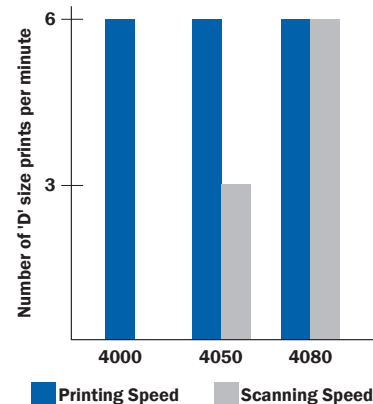
Upgrade your Starprint 4000 quickly and easily to a printer/copier system without any software upgrades. Simply connect the KIP scanner to the back of the printer.

Scanning, Copying, and Printing System: 4050 STF and 4080 STF

Available as a complete STF system or as an upgrade, these systems use a Starprint 4000 for printing, a KIP scanner for copying, and a scan-to-file workstation. These systems feature scanning and printing concurrently and can complete all of your scanning, copying, and printing needs in one modular system.

Powerprint Software

The Starprint 4000 series printer and systems utilize powerful, user friendly software and drivers that offer very fast conversion RIP speeds, an easy-to-use interface, advanced AutoCAD drivers, and a uniform software platform for all digital systems. KIP software users enjoy the software's simplicity of use and the two-way communication between their workstation and the printer. This communication enables the user to monitor the printer's status without interrupting their workflow. The Powerprint software suite is leading the industry as a powerful and easy-to-use software solution for the wide-format workplace.



KIP 4000 SERIES PRINTING FUNCTIONS

Ultra-Fast Image Processing

The Starprint 4000 series offers ultra-fast image processing times. A winning combination of lightning-fast file processing; world-class print engine technology, an AutoCAD and Windows drivers support give you complete printing control from your desktop.

The printer has an output of 6 'D' size prints per minute, suitable for mid-volume production environments. Each Starprint 4000 series offers the convenience of two media rolls. This dual-roll system enables the user to choose from bond, film, or vellum media or a combination. Auto-roll switching provides enough versatility for all standard production needs. The convenient and clean toner cartridge makes it easy to replace the mono-component toner. The Starprint 4000 printers provide consistent and precise printing and copying day after day.

Any of the Starprint 4000 series has to be connected to your network to accept print jobs from remote workstations.

Ultra-Fast Starprint Controller

The powerfully fast KIP dual processor Starprint controller supplies the user with the world's fastest RIP times. Whether you have complex images or large sets of images to process, the Starprint controller will process the data at the highest rated print engine speed, which means processing your files in seconds rather than minutes!



400 DPI Output

With output selections up to 400 DPI, you can expect razor sharp text, clean lines and 32 shades of gray from your KIP Starprint 4000 series printer and systems.

Auto-Roll Switching

The printer automatically switches from one roll to the next during printing. If the system happens to run out of paper, you can be assured that

the printer will automatically switch to print on a suitable roll without loss of print integrity.

Production/Account Information Log

The Starprint controller automatically tracks all user print requests. System usage may be tracked by user name, job number, date and time, square footage, media used, etc. All tracking data can be easily incorporated into most database programs.

Folding and Stacking Options

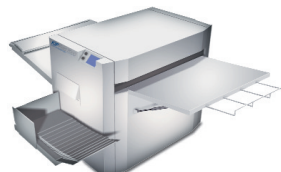
The user can select various stacking options by choosing either the Super Stacker, which can hold up to 1,000 'E' sized prints, or the KIP 300 Vertical Stacker, which is capable of holding up to 150 prints.

The KIP 300 Vertical Stacker arranges prints by size, with 'D' and 'E' size prints coming to rest in the bottom catch tray, and smaller prints stacking in the top tray.

If folded prints are required, consider the KIP Fold 7000. This online/offline folding and finishing system offers packet fold, book fold or fan fold capabilities.



Super Stacker
shown with Starprint 9000



KIP Fold 7000
Folding and Finishing System



Vertical Stacker
shown with Starprint 5000

PRINTER / COPIER FEATURES

Set copy editing features

X or Y axis individual zoom

Auto zoom

Auto paper

Auto-roll switching

Sheet feed bypass

User defined copier presets

Copy nesting and stitching

Concurrent print and copy

KIP 4000 SERIES SCANNING FUNCTIONS

Whether you're scanning to file or to a network, the scanners in the Starprint 4000 series are the best monochrome scanners in the industry. Using camera quality optics and advanced imaging technology, all scans will translate hard copy drawings into crisp, clean digital files. The scanners used in the Starprint 4000 series can be integrated into a wide range of KIP printers.

Real-Time Thresholding

Real-Time Threshold (RTT) technology automatically determines the threshold levels for every original, saving the user time and effort. This technology automatically adjusts the threshold levels on a standard 'D' size document over half a million times in seconds!

Imaging Features

Dark sepias and old blueline drawings will be transformed into clearer copies thanks to the KIP Starprint 4000 series background reduction and auto-despeckle features.

Background reduction removes the "foggy" background that is so common to this type of original. As its name implies, the auto-despeckle feature removes unwanted "dots" and "speckles".

With outstanding features like these, KIP copies and scans look as good as the original, if not better!

Versatile Scanning Software

Every KIP STF system includes two scanning software programs: Powerprint Scan and KIP Scan Client. These programs allow scanning from 100-400 DPI to TIF group 4, CALS group 4, and Intergraph CIT file types. Each program offers all the imaging settings you require, including Real-Time Thresholding, background reduction and auto-despeckle, providing precise, clean scanning results every time.



- ◆ Powerprint Scan provides concurrent print and scan-to-file, links to other software image editors, and database integration.
- ◆ KIP Scan Client provides convenient links to other software editors, file viewing, and basic image editing.
- ◆ Optional Imagenation Scan, View, Markup and Edit software features scanning, image editing, file viewing, and markup capabilities.
- ◆ Walk-up scan-to-file software allows the user to make DPI, image settings and zoom selections at the scanner touchscreen.

KIP Twain Driver

The KIP Twain Driver affords the opportunity to scan directly to third party scanning applications. For example, the KIP Twain Driver enables the use of Adobe Acrobat to scan directly to PDF file format. Now it's possible to create multi-page PDF files of entire document sets in one easy step.

On-Board Set Copies

The Starprint 4000 series scanner is equipped with 64 MB of RAM and is field or factory upgradeable to 320 MB, for single and set copying. The onboard scanner memory allows the ability to print up to 999 collated sets or single copies.

KIP sorting options include standard collation, reverse order collation, non-collation and reverse non-collation. The scanners used in the KIP Starprint 4000 series eliminate problems associated with mixed document sizes and output scaling. You can organize and deliver prints just the way you want them!

SCANNING FEATURES

Concurrent print and scan-to-file

Database integration

Real-time thresholding

Simple built-in editing features

Batch naming

Background reduction

Zoom from 5 - 3600%

Auto despeckle

High image quality

KIP POWERPRINT SOFTWARE



KIP America offers with every KIP 4000 series a full suite of Powerprint software. These integrated programs and drivers establish the standard for all of your printing, scanning, managing, and job report needs. Speed and ease of use has made this software bundle the most talked about in the industry.

Software included

Powerprint Request & Q-Vue End user Job Submission and Printer Status

Powerprint Q-Manager Administrator Print Queue Management, Job Reports

Powerprint Scan Production Scan-to-file Software

KIP Scan Client Twain supported Scan-to-file Software

KIP Twain Driver Supports Third Party Scanning Software

ADI & HDI integrated print drivers Feature two-way communication for printer status

Windows Driver Print from most Windows based applications

Powerprint Request

Powerprint Request software provides any Windows 95/98/NT/2000 workstation with the ability to submit print requests through a network. Jobs are transmitted to the print queue along with all pertinent user information such as: user name, job number, job description and media selection. The user can select enlargement/reduction, multiple copies, stamping, and pen table editing features.

Powerful AutoCAD Drivers

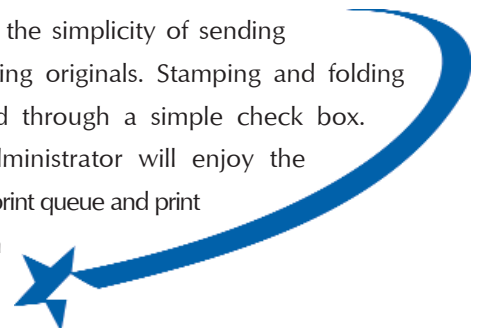
Supporting AutoCAD 14, AutoCAD 2000, and AutoCAD 2000i, KIP's AutoCAD drivers are the most sophisticated in the world. KIP Powerprint Request software provides instant two-way communication directly from AutoCAD to the KIP printer. All KIP AutoCAD drivers include Powerprint Request features such as user name, job number, description fields, and stamping.

Windows Driver

The KIP Windows driver enables printing from most Windows based applications. The driver supports set collation, fast spooling for multiple copies or sets, user name, job number, and stamping features linked from Powerprint Request.

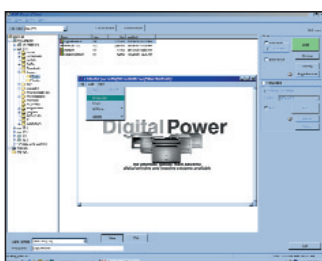
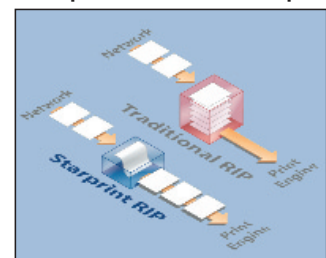
Easy to Use

Users will appreciate the simplicity of sending print jobs and scanning originals. Stamping and folding can be accomplished through a simple check box. The print system administrator will enjoy the ability to control the print queue and print job reports directly from their workstation.

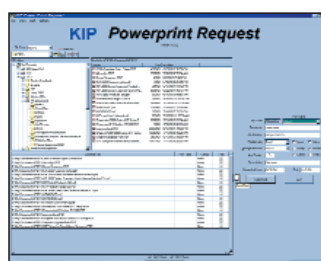


Starprint vs. Traditional RIP Process

A traditional RIP processes data until all the data has reached the printer. The Starprint RIP processes the data as soon as it reaches the printer. This gives you faster output than a traditional RIP process



KIP Scan Client



Powerprint Request

SOFTWARE FEATURES

No fee unlimited Powerprint Request seats

Two-way communication with printer

Enlargement / reduction 5% - 3600%

Job separator sheets

Database integration

Job reports

Save and recall previous print jobs

Folder integration capabilities

View files before printing

Starprint 4000



Starprint 4000 is also available with an external controller as the 2950 and 2980 Digital Reprographic Systems.

KIP America Corporate Profile

KIP America is the North American subsidiary of the Katsuragawa Electric Co., LTD, one of the reprographic industry's most renowned innovators in digital scanning and printing systems. For over 30 years, Katsuragawa has been on the leading edge of reprographic technology; producing scanning and printing solutions for the architectural, engineering, manufacturing, and construction industries. Traditionally sold as OEM products by Xerox, Océ, CalComp, Mutoh, JRL, JDL, more recently these systems have been marketed directly under the KIP brand, bringing a wealth of experience in digital reprographics directly to users.

KIP Product Range

KIP America has over 30 modular wide-format products to choose from. Analog copiers, digital CAD printers, redline printing and scanning systems, monochrome scanners and full digital reprographic systems showcase the entire product range. With printers ranging from 3 to 13 'D' size prints per minute and scanning systems ranging from 1.6 to 25.6 inches per second, KIP America has a world of impressive products to choose from.



3777 Interchange Drive, Farmington Hills, MI 48335

KIP Customer Care Center: (800) 252-6793 ♦ Fax: (248) 474-3951 ♦ Email: sales@kipamerica.com ♦ Website: www.kipamerica.com

AutoCAD is a registered trademark of Autodesk Inc. KIP Powerprint and Starprint are registered trademarks of KIP America.

All other product names mentioned herein are trademarks of their respective companies.

KIP Brochure No. 4000STR.11/00